



Thermal Imaging Camera

Industry temperature measurement

TE Series

160×120 Uncool FPA detector

Low cost, small size

50Hz realtime measurement



TE series Portable Thermal Imaging Camera



Color Warning



Voice Alarm

40 seconds of digital voice per image stored with image

TE series is a special low cost real-time IR camera in 160X120 resolution. It combines the traits of economical practical and portable. The camera symbolizes easy-to-use, standard and professional, developing for those applications that need instant infrared troubleshooting in power plant, petrochemicals, scientific research, fire fighting, and building inspection, metallurgy, etc. .

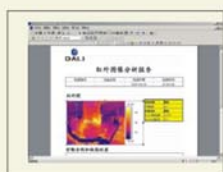


Low power consumption, 3 hours continuous operation

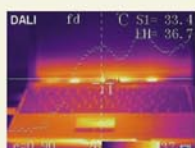


Laser Pointer

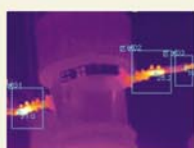
Manual Lens



Free analysis software



Line measurement



Area measurement



Optional Lenses

Parameter

Item		TE	TE-P	
Detector characteristics	Detector type	Uncooled FPA microbolometer		
	Array size/format	160×120		
Image characteristics	Field of view/min focus distance	18°×13°/0.3m		
	Spatial resolution (IFOV)	1.9mrad		
	Thermal sensitivity	≤0.1°C@30°C		
	Frame rate	60Hz	50/60Hz	
	Focus	Manual		
	Electronic zoom	N/A	2X	
	Spectral range	8-14μm		
Image display	LCD	Built-in high-resolution color 2.5" LCD		
Measurement	Temperature ranges	-20°C - +350°C	-20°C - +350°C, optional up to +600°C	
	Accuracy	± 2 °C or ± 2% of reading, Whichever is greater		
	Measurement correction	Automatic/manual		
	Measurement mode	Movable spot, Movable area (maximum, minimum and average temperatures), Isotherm, Alarm (voice, color)	Up to 4 movable spots, Up to 3 movable areas (maximum, minimum and average temperatures), Line profile, Isotherm, Temperature difference, Alarm (voice, color)	
	Color palette	3 palettes changeable	11 palettes changeable	
	Image adjustment	Auto/manual gain and brightness		
	Setup functions	Date/time, temperature unit, language		
	Emissivity correction	Variable from 0.01 to 1.0		
	Ambient temperature correction	Automatic corrections according to user input		
	Atmospheric transmission correction	N/A	Automatic correction according to user input object distance, relative humidity, ambient temperature	
	Image storage	Storage memory	Built-in flash memory, Up to 1000 images	Built-in flash memory, Up to 2000 Images
		Storage mode	Manual single image saving	Automatic/manual single image saving
		File format-thermal	JPEG, 14 bit thermal image with measurement data	
Voice annotation		N/A	Input via built-in microphone Up to 40 seconds of digital voice per image stored with image	
Laser pointer	Laser pointer	Class 2, 1mw/635nm(red)		
Power supply	Battery type	Li-Ion, rechargeable		
	Battery operating time	3 hours continuous operation		
	Charging system	Intelligent charger or power supply adaptor(optional) online charge		
	Power saving	YES		
	External power	N/A	10-15V DC	
Environment	Operating temperature	-15°C - +50°C		
	Humidity	≤90%non-condensing		
	Encapsulation	IP54		
Physical characteristics	Weight	0.6Kg		
	Dimensions	250mm×100mm×72mm		
Interface	External DC input	N/A	Yes	
	Audio output	N/A	Yes	
	Video output	N/A	PAL/NTSC	
	USB	Image, measurement data transfer to PC	Image, measurement Audio data transfer to PC	

▲ The information contained in this document is subject to change without notice