



Thermal Imaging Camera

Industry temperature measurement

DL700E+

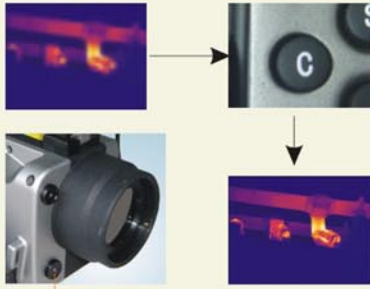
384x288 uncooled FPA detector

Auto focus, dual storage, full screen CCD



www.dali-tech.com

DL700E+ Thermal Imaging Camera



CCD Camera

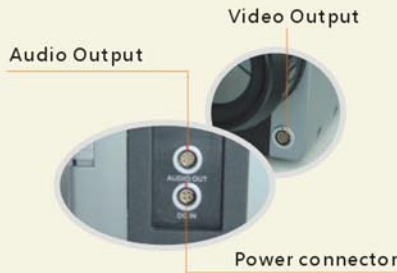
Auto focus



One button operation



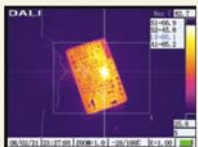
Optional LCD remote units



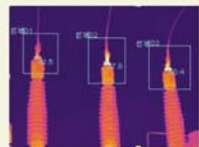
Audio Output

Video Output

Power connector



Line measurement



Area measurement



Optional Lenses

DL700E+ offers outstanding image quality and temperature measurement performance in an affordable, rugged and easy to use infrared camera. It works as a professional tool effective in different applications such as power plant, petro chemicals, scientific research, fire fighting, and building inspection, metallurgy, etc.



Parameter

Item	DL700E+		
Detector characteristics	Detector type	Uncooled FPA microbolometer	
	Array size/format	384×288	
Image characteristics	Field of view/min focus distance	16°×12°/0.5m	
	Spatial resolution (IFOV)	0.88mrad	
	Thermal sensitivity	≤0.06°C@30°C	
	Frame rate	50/60Hz	
	Focus	Auto/electronic focus	
	Electronic zoom	1-8X continuous	
	Spectral range	8-14μm	
Image display	Built-in visual camera	300,000 pixels, Pic. in Pic. or full	
	Viewfinder	Built-in high-resolution color LCD	
Measurement	LCD	High-resolution color LCD, 640×480	
	Temperature ranges	-20°C- +600°C, optional up to +1200°C	
	Accuracy	± 2 °C or ± 2% of reading, Whichever is greater	
	Measurement correction	Automatic/manual	
	Measurement mode	Up to 10 movable spots. Up to 5 movable areas (maximum, minimum and average temperatures). Line profile. Isotherm. Temperature difference. Alarm(voice, color)	
	Color palette	9 palettes changeable (Iron, Rainbow, Grey and Grey inverted, etc.)	
	Image adjustment	Auto/manual gain and brightness	
	Setup functions	Date/time, temperature unit, language	
	Emissivity correction	Variable from 0.01 to 1.0 or select from listings in pre-defined material list	
	Ambient temperature correction	Automatic corrections according to user input	
	Atmospheric transmission correction	Automatic correction according to user input object distance, relative humidity, ambient temperature	
	Image storage	Storage card	Built-in flash memory, CF card (1G), Up to 4000 images
		Storage mode	Automatic/manual single image saving
File format-thermal		JPEG, 14 bit thermal image with measurement data	
File format-visual		JPEG or linked with corresponding thermal image(Pic. in Pic.)	
Voice annotation		Input via built-in microphone Up to 40 seconds of digital voice per image stored with image	
Laser pointer	Image improvement	Averaging(S2, S4, S8, S16), Spatial filter	
	Laser pointer	Class 2, 1mw/635nm(red)	
Power supply	Battery type	Li-Ion, rechargeable	
	Battery operating time	2 hours continuous operation	
	Charging system	Intelligent charger or power supply adaptor(optional) online charge	
	Power saving	YES	
	External power	10-15V DC	
Environment	Operating temperature	-15°C- +50°C	
	Humidity	≤90%non-condensing	
	Encapsulation	IP54	
Physical characteristics	Weight	1.69Kg	
	Dimensions	305mm×130mm×135mm	
	External DC input	Yes	
Interface	Audio output	Yes	
	Video output	PAL/NTSC/ VGA	
	USB	Image (thermal and visual), measurement data and voice transfer to PC	

▲ The information contained in this document is subject to change without notice